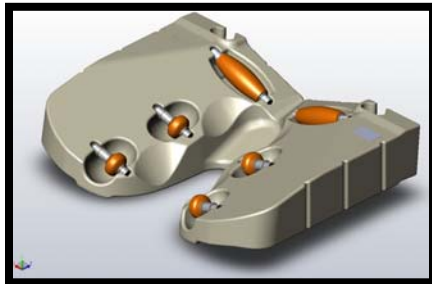


Product Announcement

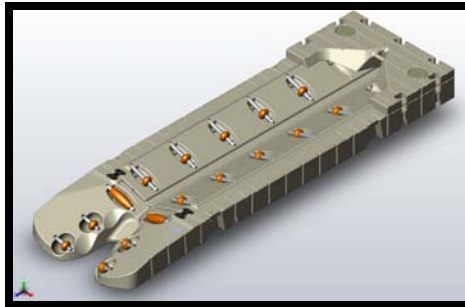


206033EX EZ PORT MAX EASY-LIFT ENTRY
206034PW EZ PORT MAX2 - FULL BOW
206035PW EZ PORT MAX2 - SMALL BOW

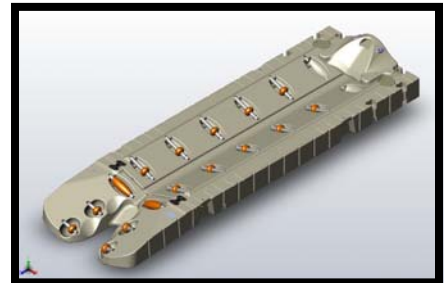
Implementation Date: November 12th 2010



206033EX



206034PW

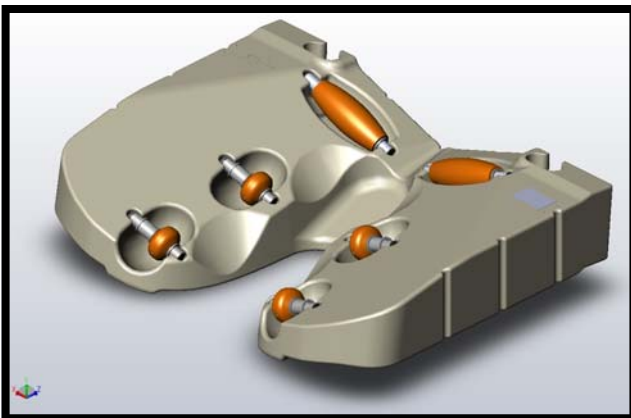


206035PW

Features and Benefits

Introducing the newest addition to the EZ Port MAX line– the new Easy-Lift Entry. The new EZ Port MAX Easy-Lift Entry is designed to attach to the current extension and create a port that is easier and “softer” to port your watercraft. The new Easy-Lift Entry roller configuration eliminates all keel rollers keeping the PWC stable and centered on the port. In addition to the individual Easy-Lift Entry, we have created two complete kits for single porting options. The 206034PW kit offers the full bow section and the 206035PW kit offers the small bow section. When assembled these kits are 15’-6” in total length.
-Happy Porting.

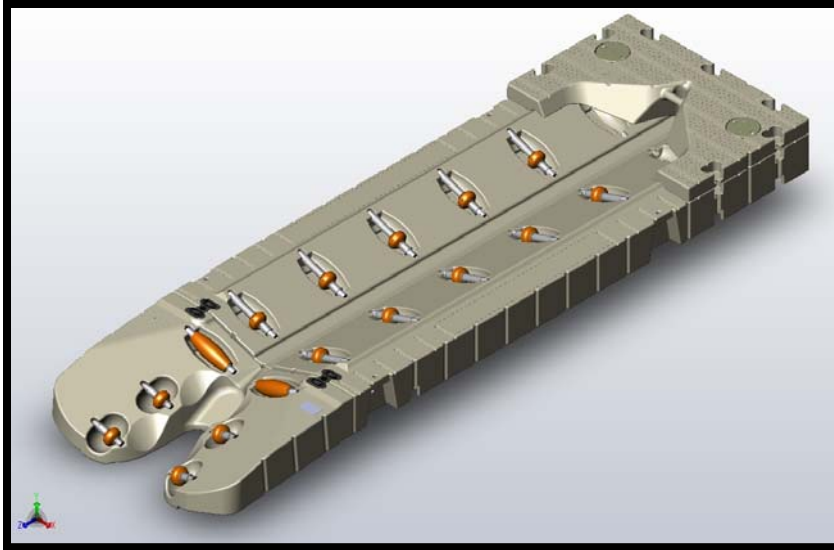
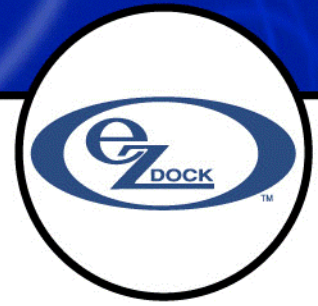
206033EZ EZ PORT MAX EASY-LIFT ENTRY



Floataion Capacity- 400lbs
Shipping Weight- 95lbs
Part Dimensions- 58”W x 42”L x15” H

EZ Dock Inc. 878 Highway 60 • Monett, MO 65708 • 888-654-8168 • fax: 417-235-2232 • www.ez-dock.com

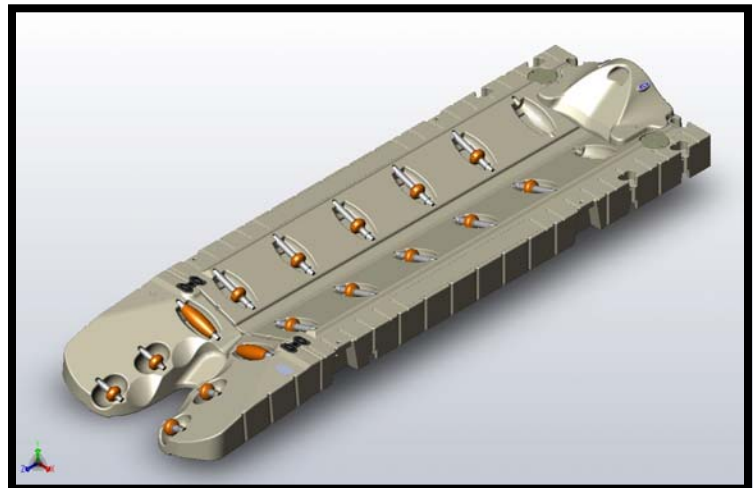
Product Announcement



206034PW EZ PORT MAX2 KIT - FULL BOW

Floataion Capacity- 1700lbs
Shipping Weight- 548lbs
Part Dimensions- 188"x 58"x15"

Kit includes new easy-lift entry, extension, full bow, and coupler set.



206035PW EZ PORT MAX2 KIT - SMALL BOW

Floataion Capacity- 1700lbs
Shipping Weight- 405lbs
Part Dimensions- 188"x 58"x15"

Kit includes new easy-lift entry, extension, small bow stop, and cou-

EZ Dock Inc. 878 Highway 60 • Monett, MO 65708 • 888-654-8168 • fax: 417-235-2232 • www.ez-dock.com

Product Announcement



This new EZ Port MAX Easy-Lift entry will come standard with the current over-molded style rollers in the four lower roller pockets. In our most recent testing we have found that some PWC's work better with a softer roller in these initial entry positions. To accommodate these situation we are offering an optional roller kit (250008) to change out the over-molded rollers with a grooved urethane roller. As we gain more experience with this new entry there may be additional roller options available meet the needs of the growing watercraft markets: PWC's, class A boats, and other types of watercraft. As these become available you will be notified by a product announcement.

250008 KIT, 4 EA GROOVED TORPEDO END ROLLER



INSTALLATION FOOTNOTE: In our testing, for certain watercraft, it was shown that water ballasting (add water into) the new EZ Port MAX Easy-Lift Entry provided improved entry. While this may allow the watercraft an easier entry it also reduces the overall lifting capacity of the port. If ballasting is done then care should be taken in balancing the ease of entry and lifting capacity. Water ballasting is done by simply filling the Easy-Lift Entry with water to the desired level with the watercraft is loaded.

EZ Dock Inc. 878 Highway 60 • Monett, MO 65708 • 888-654-8168 • fax: 417-235-2232 • www.ez-dock.com